



Quarterly Newsletter: Q2 2019

Vol. 2, Issue 2 || Edited by Jarrod Tennell BA

IMS is an AS9100 Rev D. Certified Woman and Minority Owned Small Business specializing in research, analysis, processing, and delivery of hard to find exotic metals for Aerospace, Defense, and Satellite Companies.

Our goal is to change how metal and materials are procured throughout the world by increasing client productivity and operational efficiency.



(Photo by: <http://www.hanoitimes.vn>)

Section 232 Tariff for Aluminum & Steel (Continued)

As mentioned on our last newsletter that this Tariff is currently affecting the industry to short period of pricing from mills and distributors. Our solution in essence allows producers and consumers more accurate quoting by updating our loyal customers and partners on the market average price for materials every newsletter. We want to aide in the most effective way possible with your purchasing and processing needs. We at IMS have always been determined to embody the integrity and professionalism you as consumers deserve. (See below)

Launch Market Pricing for IMS: SHARING 4 POPULAR GRADES IN PLATES AND 1 ULTRA SONIC TESTING MARKET PRICE.

(***NOTE: THIS PRICING IS BASED ON THE MARKET 'TREND' REVIEW FROM MILLS AND DISTRIBUTORS ONLY ACROSS THE UNITED STATES. THESE PRICES ARE NOT AVAILABLE FOR PURCHASE UNTIL QUOTED.)

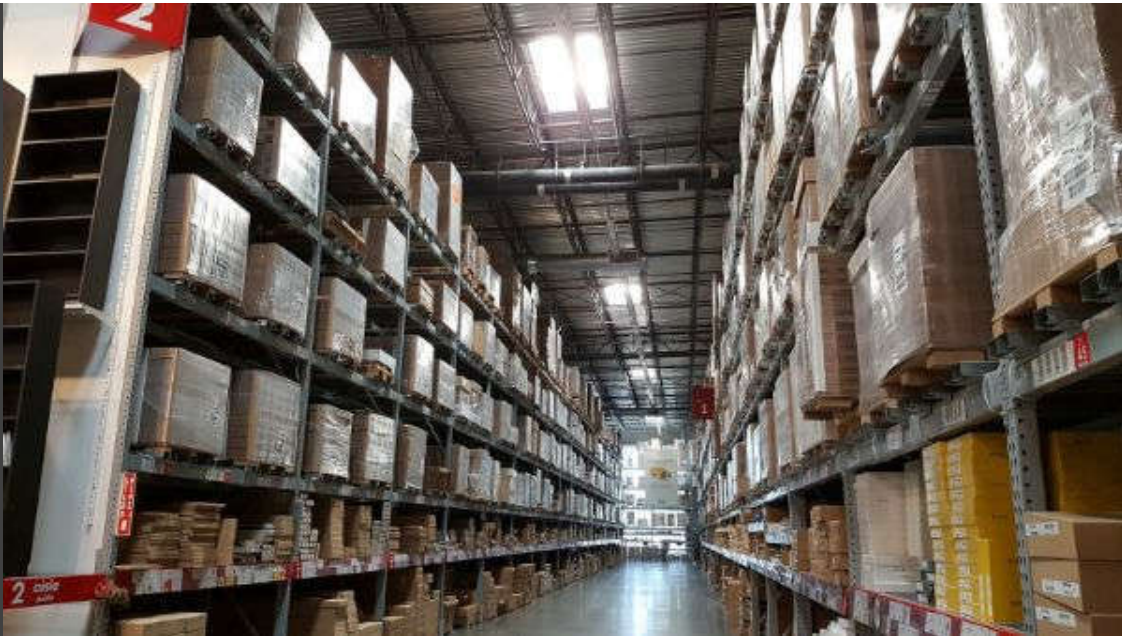
15- 5 PLATE \$5.80-\$11.00/LB (BASED ON 162-880LBS QUOTES) ; AVERAGE \$8.56/LB

17-4 PLATE \$6.60-\$13.92/LB (BASED ON 1000-2000 LBS QUOTES); AVERAGE IS \$7.26/LB

6061 PLATE \$2.70-5.67/LB (BASED ON 128-500 LBS QUOTES); AVERAGE IS \$5.20/LB

7075-T7451 PLATE \$3.98-4.50/LB (BASED ON 2000 LBS); AVERAGE IS \$4.41/LB

ULTRA SONIC PRICING PER ATMB594 \$250-500/LOT CHARGE



INTERNATIONAL METAL SOURCE (IMS) LAUNCHES REM INVENTORY

Inventory accuracy is a useful tool for our type of industry, especially when the inventory offered is multi-processing remnant stock. Inventory such as what IMS is offering has a significant impact to Engineering and Research & Development when it comes to reduced cost and lead time. International Metal Source also pride themselves in working with the most rare materials and they are well-informed to their diverse compositions, therefore your choices are incomparable. Try out IMS' Live REM INVENTORY NOW! Go to their website at www.imetalsource.com.

*****EASY REM LIST TO CHOOSE FROM ON WEBSITE*****

IMS' Rem ****LIVE****

Quantity	Category	Temper	Shape	Dimension	Specification	Tracer
2	A514	Grade F	Plate	2.50" X 8.0" X 11.0"	ASTM A-514	4491
1	A514	Grade Q	Plate	2.5" X 11.5" X 25.5"	ASTM A-514	4413
1	A514	Grade Q	Plate	3.5" X 8.5" X 11.5"	ASTM A-514	4413
1	A514	Grade Q	Plate	3.5" X 3.25" X 16.75"	ASTM A-514	4413
1	A514	Grade B	Plate	1.25" X 17.25" X 28"	ASTM A-514	4413
1	A514	Grade B	Plate	1.25" X 8.5" X 32.25"	ASTM A-514	4413
2	A514	Grade B	Plate	0.477" X 8.5" X 23"	ASTM A-514 (GROUNDED)	8910
1	A500		Rect. Tube	4.0" X 4.0" X .250" W X 72.0"	ASTM A-A500	4175
1	A500		Rect. Tube	3.0" X 6.0" X .250" W X 47.0"	ASTM A-500	5930
1	A653		Sheet	.056" X 24" X 24"	ASTMA-A653	8834
1	A653		Sheet	.056" X 10.125" X 95.6"	ASTMA-A653	8834
4	1018	Gr. 36, Type 2	Plate	.250" X 8.25" X 42.0"	ASTM A-1018	4148A
1	1018	Gr. 36, Type 2	Plate	.250" X 2.5" X 48.25"	ASTM A-1018	4148A
1	1018	Gr. 36, Type 2	Plate	.250" X 3.125" X 48.25"	ASTM A-1018	4148A
1	1018	Gr. 36, Type 2	Plate	.250" X 8.5" X 48.25"	ASTM A-1018	4148A
1	1018	Gr. 36, Type 2	Plate	.250" X 7.5" X 42.0"	ASTM A-1018	4148A

(Photo by: <http://www.imetalsource.com>)

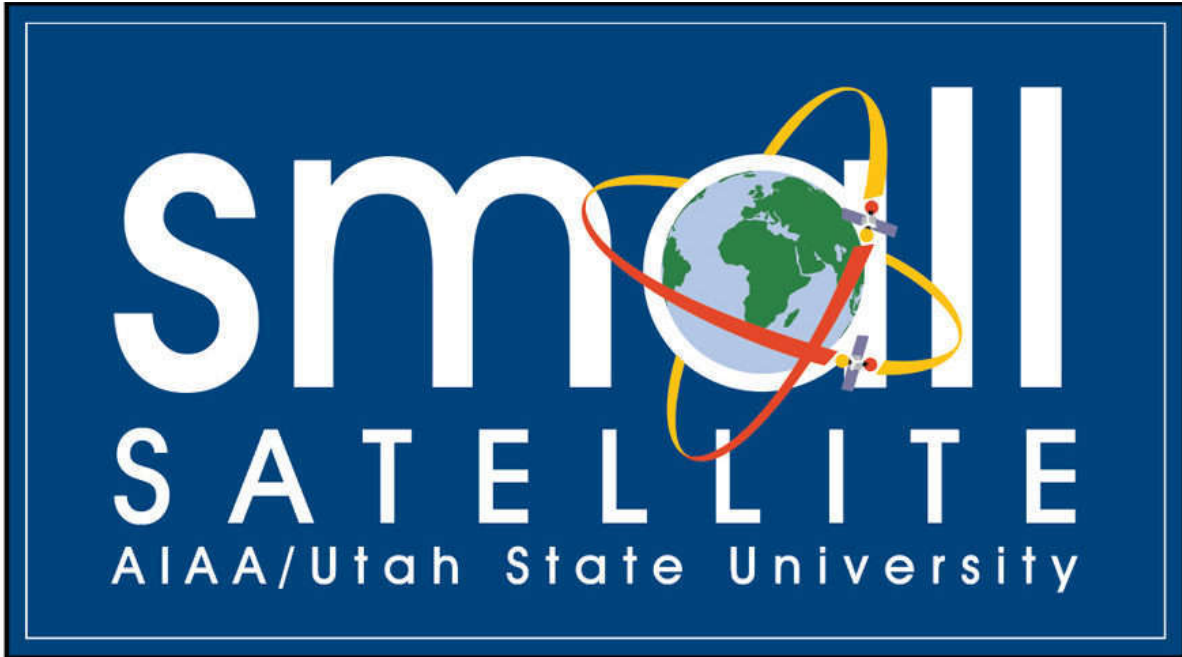


(Photo by: <http://www.nytimes.com>)

'The Tipping Point'

The buzz is true that many manufacturing companies are slowly migrating outside California or to different countries. Since International Metal Source (IMS) is based in California we particularly want to focus our topic in California. Recently, some companies like Jacob Engineering a Cyber & Security firm moved from Pasadena to Texas, Aerojet Rocketdyne a large aerospace and defense company will be or have moved from Rancho Cardova to Alabama, and Aeromax Industries a leading manufacturer of military aircraft parts will be moving to Texas from California. A lot of factors weigh into these moves. One being, California's state and city taxes are atop the highest in the nation, "California's tax system, which relies heavily on the wealthy for state income, is prone to boom-and-bust cycles. While it delivers big returns from the rich whenever Wall Street goes on a bull run, it forces state and local governments to cut services, raise taxes or borrow money in a downturn" (calmatters.org). So we see in the downturn of an up and down economy local small businesses in California pay the price.

Further, for those who are left behind in California there are worries that many small businesses that are within an ecosystem will hurt programs or contracts in place if companies relocate. Most of these companies can be small businesses that assist in the early stage of manufacturing. These businesses cannot afford to be in CALIFORNIA. IMS understands these concerns, and we are listening. We will keep you up to date with the current state and future outlook of California's economical lifeline. IMS is a proud California owned and operated woman and minority small business and we believe in the future of a healthy and prosperous California economy.



(Photo by: <http://www.smallsat.org>)

IMS will be at SMALL SATELLITE CONFERENCE IN AUGUST!

IMS will be networking and learning how we can apply our Invention-on-works to the satellite structure manufacturers. Join Us!



Please continue to keep a lookout on future newsletters for our up to date market pricing on materials. Thanks!

Gratitude for Blessings

IMS is eternally grateful for the continued support of loyal customers and vendors alike. We are blessed to have such great clients who can understand the hardships all businesses face in the manufacturing industry. We aspire to achieve great things together with you all first and foremost with your well-being in mind. Stemming from humble beginnings 10 years ago to now becoming a worldwide multi-million dollar organization; we are powered only by the grace and blessing of all. For this we Thank You!

*Thank
you*





Copyright © 2019 International Metal Source, All rights reserved.

International Metal Source
1848 North Orangethorpe Park,
Anaheim, CA 92801
service@imetalsource.com

Want to change how you receive these emails?
You can [subscribe](#) or [unsubscribe from this list](#).

References:

Section 232: Steel And Aluminum Tariffs (2018) Livingston

<https://www.livingstonintl.com/resource/section-232-steel-aluminum-tariffs/>

Successful launch propels OneWeb to \$1.25B in new funding (2019) Tech Crunch

<https://techcrunch.com/2019/03/18/successful-launch-propels-oneweb-to-1-25b-in-new-funding/>

This email was sent to sergii@imetalsource.com

[why did I get this?](#) [unsubscribe from this list](#) [update subscription preferences](#)

International Metal Source · 17605 Fabrica Way Suite E · Cerritos, CA 90703 · USA

